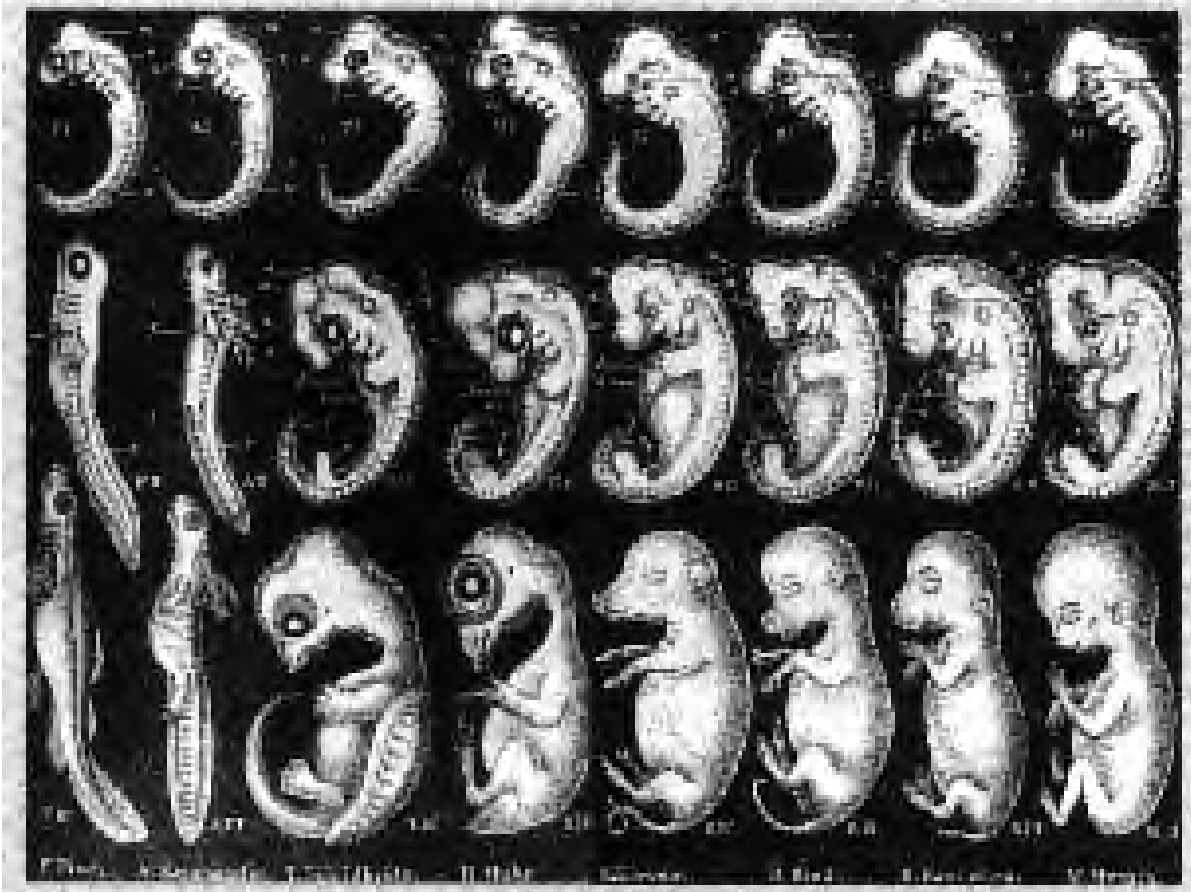


Top row: Haeckel's drawings of several different embryos, showing incredible similarity in their early 'tailbud' stage.

Bottom Row: Photographs of how the embryos really look at the same stage of development (Richardson 1997).

From left: *Salmo salar*, *Cryptobranchus allegheniensis*, *Emys orbicularis*, *Gallus gallus*,



Bottom: Haeckel's set of 24 drawings supposedly showing the Embryonic development and similarity of eight different organisms. These organisms are shown in three stages of development.